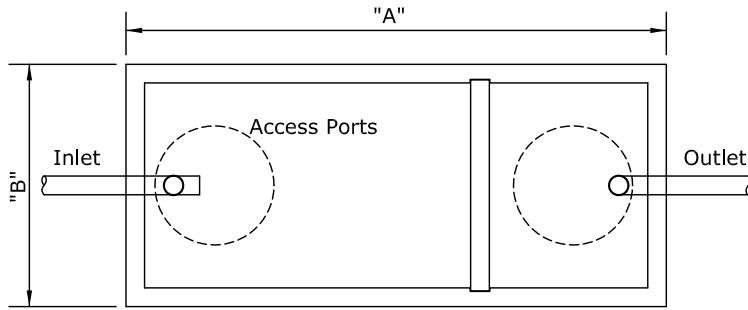


Notes:

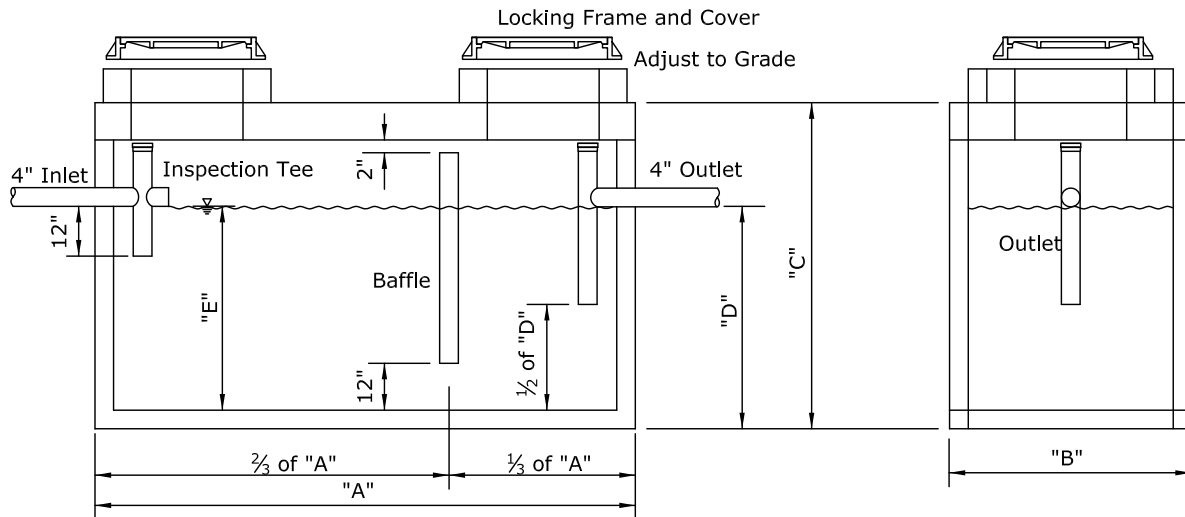
1. Please contact the Utility Connection Coordinator
2. at 919-777-1243 for additional information.
3. Concrete: Minimum 4500 psi at 28 days.
4. Rebar: ASTM A-515, Grade 60.
5. Loads: AASHTO H20 Bridge load
6. Effluent filter is required.
7. Some variations of dimensions and design shall be allowed due to each manufacturer's specifications for pre-cast units. Shop drawings shall be submitted for review in all cases.

Capacity*	"A"	"B"	"C"	"D"	"E"
1000	7'-0"	5'-0"	7'-2"	4'-2"	3'-10"
1250	9'-0"	5'-0"	7'-2"	5'-2"	4'-10"
1500	9'-0"	5'-8"	7'-2"	4'-4"	4'-0"
1750	11'-2"	5'-8"	7'-2"	4'-11"	4'-7"
2000	11'-2"	6'-8"	8'-0"	4'-7"	3'-10"
2500	12'-8"	6'-8"	8'-0"	5'-6"	4'-9"
2750	12'-8"	6'-8"	8'-0"	6'-0"	5'-3"
3000	15'-7"	9'-7"	9'-7"	6'-3"	3'-9"
4000	15'-7"	9'-7"	8'-6"	6'-3"	5'-0"
5000	19'-11"	9'-11"	8'-11"	6'-2"	4'-9"
6000	19'-11"	9'-11"	10'-5"	7'-2"	5'-9"

* - Measured in gallons



Top Section



Front Section

End Section



Grease Interceptor

City of Sanford Engineering Dept - P.O. Box 3729 - Sanford, NC 27331

Dwg. No. SD-S-004

Date: 07/10/14

Scale: Not To Scale

Drawn By: Staff